



**THE TALL SHIPS RACES
Fredrikstad 2023**

organised by Sail Training International



**THE TALL SHIPS RACES
Lerwick 2023**

organised by Sail Training International

THE TALL SHIPS RACES 2023

Cruise **in** Company

18 - 26 JULY 2023

...waiting to welcome you ashore



Cruise in Company



Image: Sail Training International

A spectacular selection of incredible locations awaits the Tall Ships fleet on the 2023 Cruise in Company route – join us for an amazing adventure!

The Cruise in Company leg between Fredrikstad and Lerwick will provide an exciting opportunity for the participating crews of the Tall Ships Races 2023 to explore the coastlines, towns and villages of the Norwegian and Scottish coastlines.

A Cruise in Company is not a competitive event, but instead offers hospitality, friendship and shared experiences for crews and communities to enjoy together.

The size and capacity of each Guest Harbour will vary and priority will be given to ships who can provide early confirmation of their visit. With eleven harbour locations to choose from and an exciting programme of activities provided in each location, there will be plenty of options to accommodate the whole fleet.

Cruise in Company teams in both Fredrikstad and Lerwick will provide regular updates on their websites to inform ships on availability, booking information and activities for each Guest Harbour. The teams will also provide assistance where required with passage planning and any Border Force enquiries.

Introduction	2
Guest Harbour Map	3
Harbour Technical Information	4
Langesund NORWAY	5
Kristiansand NORWAY	6
Båly NORWAY	7
Sirevåg NORWAY	8
Bekkjarvik NORWAY	9
Aberdeen SCOTLAND	10
Stromness ORKNEY	11
Cullivoe YELL	12
Baltasound UNST	13
Harbour Contact Information	14



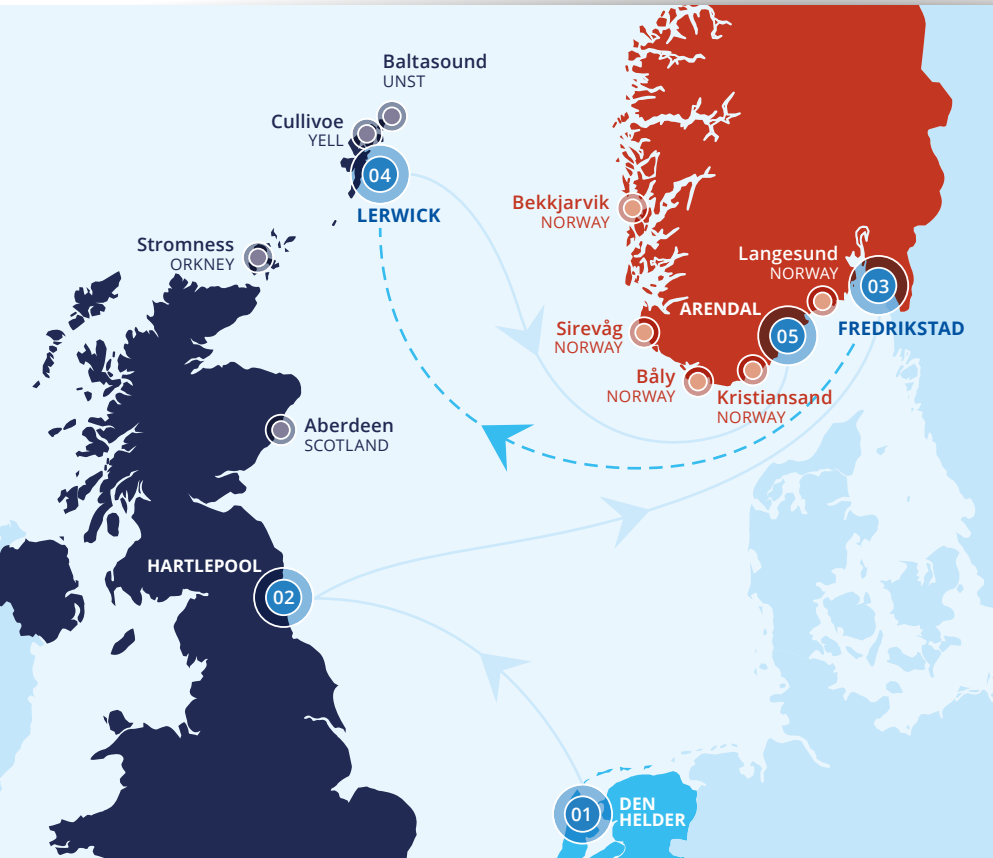
Image: Sail Training International and Valery Vasilevsky

THE TALL SHIPS RACES 2023

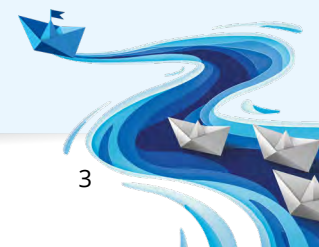
Cruise in Company

Guest Harbour Map

Between 18th and 26th July 2023, nine fantastic Guest Harbours await the arrival of Tall Ships and Small Ships during the Cruise in Company event.



- (0) — CRUISE IN COMPANY
- (0) — NORWEGIAN CRUISE IN COMPANY HARBOURS
- (0) — SCOTTISH CRUISE IN COMPANY HARBOURS
- (0) — THE TALL SHIPS RACES 2023



Cruise in Company

Harbour Technical Information

Guest harbours will vary in size, capacity and facilities.

There will be no harbour charges. Free delivery of fresh water is possible in most of the harbours. Sail Training International, the Councils of Fredrikstad and Shetland and the organising committees in Fredrikstad and Shetland cannot take any responsibilities for errors or omissions in the information given about the harbours.

Sail Training International and the organising committees in Fredrikstad and Shetland will in no event be liable for any consequential damages that may be caused during The Tall Ships' Races 2023, including the Cruise in Company leg.

It is taken for granted that all participating ships have the necessary insurance required by UK and International law.

Harbour	Class Quay Capacity (pending availability)				Safe/Inside Harbour Anchorage (all Classes)	Berthing Depth (m)	Pilot Available	Tug Available
	A	B	C	D				
NORWAY Langesund	○	○	○	○	○	3.9 – 5.4m	Book	Book
NORWAY Kristiansand	–	○	○	○	○	5m	Book	Book
NORWAY Båly	○	○	○	○	○	8m	Book	Book
NORWAY Sirevåg	○	○	○	○	○	4 – 9m	Book	Book
NORWAY Bekkjarvik	○	○	○	○	○	4 – 9m	Book	Book
SCOTLAND Aberdeen	○	○	○	○	–	6m	Book	Book
ORKNEY Stromness	○	○	○	○	○	4.5 – 6m	Book	Book
SHETLAND Cullivoe	○	○	○	○	○	6m	–	–
SHETLAND Baltasound	○	○	○	○	○	5m	–	–

SafeSeaNet Reporting

All sailing routes must be registered in SafeSeaNet, one registration for each call.

All TSR participants must report within 24 hours before any movement in Norwegian waters.

UK Coastguard

We will be working with the Maritime Coastguard Agency to ensure fleet safety is paramount and an official reporting system will be in place during the event. Further details will be issued at the Captain's briefing in Fredrikstad.

UK Border Entry Requirements

Assistance with the necessary UK Border Force procedures for entering UK ports will be provided. You will have a single point of contact, regardless of which of the Cruise in Company ports you first enter in the UK.



Langesund Port of Grenland NORWAY



ACTIVITIES & PLACES OF INTEREST

- Music festival
- Barbeque

Langesund is a picturesque town in Bamble, Telemark. In the summer this quiet town transforms into one of Norway's best known concert venues. Langesund is bustling with life, street music, flea markets, exhibitions and restaurants and is definitely the place to be. This area has one of Norway's most wonderful collections of small islands and is a popular destination for sailors and boaters.

Langesund is the administrative and cultural center in the municipality of Bamble, which has around 14,000 inhabitants. Trade and tourism are key areas in Bamble as well as the development of a thriving green industry on an international scale.

Approaching by sea you will pass the best-known landmark in Langesund - The lighthouse. On the opposite side lies the former military fort - Tangen Fortress - a popular hike and view point.

We are looking forward to welcoming you to Langesund!

GENERAL FACILITIES

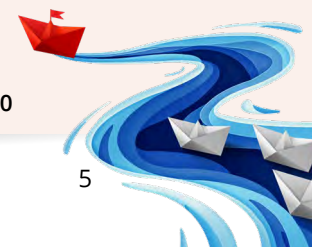
- Restaurants
- Shops
- Electricity
- Water
- Showers
- Crew restaurant with Internet

SPORTS FACILITIES

- Free access to gym, sauna and shower
- Free access to swimming pool (inside)
- Free soccer field
- Free outdoors training park
- Free sandvolleyball court
- Hiking

For more information, please scan the QR Code above.

DISTANCES IN NAUTICAL MILES Fredrikstad 50 • Lerwick 400





Kristiansand

NORWAY



Kristiansand is a city of longstanding seafaring traditions, mainly maintained by local involvement in our full rigged ship, Sørlandet.

Kristiansand is becoming increasingly multinational, with more than 145 nationalities represented, and a rich variety of cafes, restaurants, and cultural activities. The old city of Kristiansand is home to Northern Europe's largest collection of low, terraced, white wooden houses dating back to the 18th century.

Kristiansand is a modern city with a cosmopolitan history. A leading light in the technology sector and number one in exports, the region is the fastest growing in Norway. Surrounded by picturesque scenery – from tiny rocky islands in the fjords to snow-covered mountains inland – Kristiansand offers a rich variety of recreational activities.



GENERAL FACILITIES

- Electricity 16 amp
- Fresh water
- Showers
- Toilets
- Restaurants

SPORTS FACILITIES

- Hiking areas
- Canoeing

ACTIVITIES & PLACES OF INTEREST

- Shopping
- Cinema

For more information, please scan the QR Code above.
DISTANCES IN NAUTICAL MILES Fredrikstad 125 • Lerwick 325

Lindesnes in Adger is located on the southernmost point of Norway. A beautiful archipelago protects the port from sea swell. Båly is part of Lindesnes municipality and is the closest settlement to the popular tourist attraction of Lindesnes Lighthouse with its visitor centre.

Båly is a vibrant fishing village with several restaurants including the world-famous underwater restaurant "Under".

The man-made, 930-metre-long canal Spangereidkanalen starts in Båly.

This gives smaller vessels the opportunity to transit inshore.

Båly and its surrounding areas also offers white sandy beaches, great fishing grounds, trekking, rafting, kayaking and some beautiful old island settlements.



GENERAL FACILITIES

- Restaurants
- Shop
- Water
- Electricity TBA
- Wi-Fi
- White sandy beaches

SPORTS FACILITIES

- Kayaks
- Bikes
- Rafting



Båly NORWAY



ACTIVITIES & PLACES OF INTEREST

- Lindesnes Lighthouse
- Underwater restaurant
- Great fishing grounds

For more information, please scan the QR Code above.

DISTANCES IN NAUTICAL MILES Fredrikstad 150 • Lerwick 290





THE TALL SHIPS RACES
Fredrikstad 2023

Sirevåg NORWAY



Every summer the idyllic harbour in Sirevåg is a popular destination for sailors and boaters. Sirevåg has a very large jetty/ breakwater protecting its harbour (Europe's second largest man-made jetty) which makes it a safe and good place to dock. It's closest neighbour to the north is Jærstrendene, with beautiful beaches and wide horizons.

During World War II, the German occupiers built a fortress on the Vedafjellet, just south of Sirevåg, as part of "Festing Norwegen". Viewpoints and caves in the mountains are still intact and are visited by a large number of tourists each year.

ACTIVITIES & PLACES OF INTEREST

- 21 July Local market open from 12:00 - 18:00
- 21 July Tall Ships Races Cruise in Company festival in our beautiful harbour
- 21 July Crew Party in the afternoon or evening
- German Coastal fortress from World War II with viewpoints and caves
- Nice sandy beach / bathing place
- Hike in nature

GENERAL FACILITIES

- Water
- Electricity
- Toilets and showers
- Free WiFi
- Small grocery store and bakery close to the harbour
- Café, bar, hotel
- Sirevåg train station close to the harbour
- Stavanger airport 6 miles from the harbour

For more information, please scan the QR Code above.

DISTANCES IN NAUTICAL MILES Fredrikstad 205 • Lerwick 235



Bekkjarvik NORWAY



ACTIVITIES & PLACES OF INTEREST

- Beach
- Hiking opportunities
- Park

Bekkjarvik has been an important centre for trade in Sunnhordland. Bekkjarvik gave good shelter for sailors and fishermen on their way into Bergen. In the end of the 1600's, Bekkjarvik Gjestegiveri was built to house sea travellers, on orders from the Danish King Cristian 4.

Fisheries have continually been important in Bekkjarvik and at some point, there was a barrel factory in the port. You can still see the old hangers for closing nets, and in the main building there is an exhibition showcasing the history and fisheries of Bekkjarvik. Today, fisheries are still a big part of Bekkjarvik, fishing vessels are often seen in port.

GENERAL FACILITIES

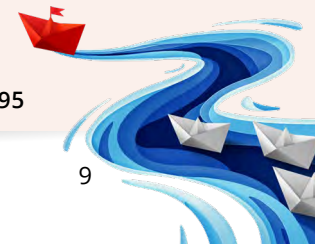
- Shopping mall
- Restaurants
- Toilet and showers
- Electricity 230/400
- Free WiFi

SPORTS FACILITIES

- Gym

For more information, please scan the QR Code above.

DISTANCES IN NAUTICAL MILES Fredrikstad 305 • Lerwick 195





Aberdeen SCOTLAND

Images: Aberdeen City Council.



Aberdeen is the capital of Northeast Scotland and has a rich maritime history. The port was established in 1136 by King David I and is the oldest existing business in Britain.

The harbour is in the vibrant heart of Aberdeen so shops, cafes, restaurants, bars, music venues, cinemas and the Art Gallery are just a few minutes' walk away. Overlooking the harbour is the Maritime Museum which explores the history of the city from early merchant traders to the offshore energy boom of recent decades.

Aberdeen is famous for its granite architecture which gives the city a quality unique in the world. Within easy walk of the harbour there are grand Victorian buildings, older cobbled streets and neighbourhoods, and a recently redeveloped city park. Slightly further afield is the impressive beachfront, amusement park, crazy golf, bowling, Aberdeen Sports Village, and the 15th century University campus.

ACTIVITIES & PLACES OF INTEREST

- Free city walking tours - Maritime Museum, Provost Skene's (17th Century) House, Aberdeen Art Gallery, Union Terrace Gardens.
- Street food, dinner, and music entertainment at the Beach Ballroom.
- Art Deco Beach Ballroom Music could include Ceilidh band, local live music acts, DJ, etc.
- Partnerships with local business to provide free access to cinema, indoor or outdoor amusements, and music venues.
- Outdoor social events could be arranged depending on local business support.

GENERAL FACILITIES

- Cafes and restaurants
- Supermarkets
- Clothing shops
- Laundry service providers
- Temporary toilets and showers
- Fresh water
- Shore power via 3rd party generators

SPORTS FACILITIES

- Aberdeen Sports Village day pass:
*Gym • Exercise Class • Athletics
Squash • Swim • Football
Basketball Badminton
Table Tennis • Public Diving*

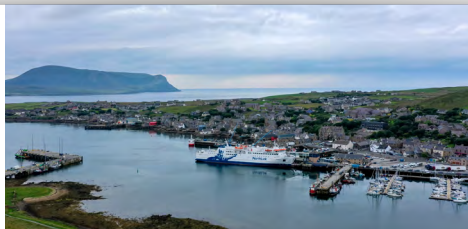
For more information, please scan the QR Code above.

DISTANCES IN NAUTICAL MILES Fredrikstad 450 • Lerwick 185



Dating from the 17th century, Stromness owes its origins to its excellent harbour. Stromness is a picturesque and bustling small town, shaped by the sea. A safe haven in Viking times, a whaling and fishing port, a base for divers diving the wrecks of the German High Seas fleet in Scapa Flow and a ferry gateway to Scotland, the town's maritime heritage is unparalleled.

Hamnavoe, the bay on which Stromness sits, takes its name from the Old Norse "Hafn-vagr" meaning "Haven Bay". Stromness had strong links with the Hudson Bay Company and once held a monopoly over trade around Hudson's Bay in Canada. The company's ships regularly called into Stromness for supplies and crew and by the late eighteenth century - three-quarters of the Company workforce in Canada were Orcadians. The tall ships visiting in 2023 will be following a course that has been sailed many times before.



Stromness

ORKNEY

GENERAL FACILITIES

- Cafes, restaurants, shops and supermarket
- Laundry facilities
- Toilets and showers
- Fresh water and shore power
- Tourist information centre
- Garbage may be landed Euro bins, a skip, oil collection tank
- Cranes are available by arrangement
- Gas oil is available from road tankers

SPORTS FACILITIES

- Swimming pool, gym, and health suite
- Well-stocked library
- Stromness Golf Club
- Cycle hire
- Trout fishing and sea angling

For more information, please scan the QR Code above.

DISTANCES IN NAUTICAL MILES Fredrikstad 495 • Lerwick 110

ACTIVITIES & PLACES OF INTEREST

- Stromness Shopping Week - parades, games, street entertainment, Shopping Week 10k race and more.
- Skara Brae settlement.
- Two highly acclaimed breweries, villages with shops, tearooms, and craft studios.
- Pier Arts Centre, galleries, artist studios and Stromness Museum.
- Former WW2 camp, near Scapa Flow.
- Challenging walk up Brinkies Brae.





Cullivoe

YELL – SHETLAND



Yell is an island worth shouting about, and its northerly fishing village of Cullivoe – the main port – is the perfect mix of industry and idyllic Shetland scenery. Famed for its musicianship and maritime history, Cullivoe knows how to welcome the world.

Dating back to the Viking times, the modern day Cullivoe Harbour provides excellent shelter, berthing and anchorage, plus stores and other amenities. With an industrial pier and two small boat marinas, Cullivoe caters to North Sea fishing fleets as well as a thriving local aquaculture industry. With a population of only 200+ people, Cullivoe is among the UK's top ports for quantity and value of seafood landings.

We're a community that instinctively understands the sea. As in 2011, we'll host a festival of events – called 'Sail Yell' – during the 2023 Cruise in Company. We all look forward to inviting you and your vessel to the warmest of welcomes in Shetland next summer.

ACTIVITIES & PLACES OF INTEREST

- Trips to award winning local beaches.
- Guided tours of the Cullivoe Galley Shed (the home of the island's Viking Fire Festival).
- Visit Shetland Ponies.
- Walks to various beauty spots and archaeology sites.
- Watch sporting events on the big screen.
- 'Sail Yell' festival with Shetland food and drink, stalls, amusements, and – most importantly – live local music.

GENERAL FACILITIES

- Public toilets
- Water supply
- Ice plant
- Stores by arrangement with local shop RS Hendersons
- Diesel fuel may also be available (please enquire in advance)

SPORTS FACILITIES

- Yell Leisure Centre (6 miles from Pier) *Swimming Pool • Sports Hall Gym • Pool/Snooker • Table Tennis Squash Court*
- Surfing/bodyboarding at nearby Breckon beach.
- Traditional sailing/rowing trials from the Pier.
- A community 5k fun run will also be held around Cullivoe.

For more information, please scan the QR Code above.

DISTANCES IN NAUTICAL MILES Fredrikstad 455 • Lerwick 35



Unst is Britain's most northerly island and said to be the inspiration for Robert Louis Stevenson's Treasure Island, the author having visited Muckle Flugga lighthouse. Unst is a treasured island to locals, and visitors alike.

To the north of Unst is the Muckle Flugga and Out Stack, the most northerly point of Britain. Hermaness National Nature reserve has magnificent cliffs and is one of the wonders of the bird world.

Baltasound is a large and well-serviced harbour, sheltered by Balta Island.

Haroldswick is home to Unst Boat Haven, Shetland's only museum dedicated to the history of Shetland's distinctive wooden boats. The Unst Heritage Centre includes displays on the island's famous fine lace knitting and spinning.

Unst is home to the 'Shetland Reel' gin distillery and has hosted Up-Helly-Aa celebrations in Uyeasound for over 100 years.



Baltasound UNST – SHETLAND

GENERAL FACILITIES

- Fresh water
- Toilets and showers
- 130 litre fuel drum
- 900 litre mobile fuel bowser
- 3 shops, bakery and cafe

SPORTS FACILITIES

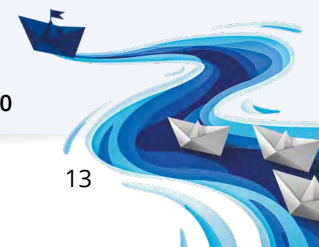
- Baltasound Leisure Centre:
*Swimming • Games Hall
Tennis Court • Squash Court
Outdoor Pitch*
- Nine-hole golf course

ACTIVITIES & PLACES OF INTEREST

- Unstfest festival
- Guided walks
- Fun football tournament
- Dancing to local and visiting bands
- Craft fair and local produce
- Beach yoga
- Island tours
- 76ft replica Viking Longship

For more information, please scan the QR Code above.

DISTANCES IN NAUTICAL MILES Fredrikstad 450 • Lerwick 40



THE TALL SHIPS RACES 2023

Cruisein Company

Harbour Contact Information

Each Guest Harbour has a main contact to answer any direct questions you may have about berthing or facilities, and to assist with booking. A programme of social activities will be provided by each location and added to the website and shared directly with the fleet.

Bookings should be made as early as possible to secure your berth in the Guest Harbour(s) of your choice.



Langesund *Port of Grenland* NORWAY

Port Captain

E wa@grenland-havn.no

T + 47 35 93 10 00

Kristiansand NORWAY

Båly NORWAY

Kjell Anders Olsen

Karl R. Danielsen

E post@krsgjestehavn.no

E post@kristiansandhavn.no

T +47 489 94 640

T +47 38 00 60 00

Sirevåg NORWAY

Anne Marie Gjølme

E AnneMarie.Gjolme@ha.kommune.no

T +47 900 75 746

Bekkarvik NORWAY

Gunn Mette Kvist

E gmk@morenot.com

T +47 916 87 727

Aberdeen SCOTLAND

Marlene Mitchell (Port of Aberdeen)

Matthew Williams (Aberdeen City Council)

E m-mitchell@portofaberdeen.co.uk

T +44 (0) 1224 597030

Stromness ORKNEY

Michael Morrison

E michael.morrison@stromnessorkney.com

T +44 (0) 7552 804263

Cullivoe YELL – SHETLAND

Daniel Lawson

E daniel@shetlandfishermen.com

T +44 (0) 7765 560695

Baltasound

UNST – SHETLAND

Heather Gray

E info@unstfest.org

T +44 (0) 7867 917060





Images: Sail Training International



THE TALL SHIPS RACES 2023

Cruise in Company



THE TALL SHIPS RACES
Fredrikstad 2023



THE TALL SHIPS RACES
Lerwick 2023



...waiting to welcome you ashore



Sail Training International

Charles House, Gosport Marina, Mumby Road, Gosport, PO12 1AH
Telephone +44 (0) 23 9258 6367 Fax +44 (0) 23 9258 4661
Email office@sailtraininginternational.org
www.sailtraininginternational.org



Image: Sail Training International and Valery Vasilevsky